

Department of Theatre & Dance and
College of Arts & Humanities present

A PLAY BY JOHN CARIANI

PAGE TO STAGE

ALMOST, MAINE



November 7-8, 2025 at 7:50PM
Malone Hall Courtyard

TROY
UNIVERSITY™

Department of
Theatre and Dance

Free Admission
Directed by John Alloway,
John Ingram, & Kate Zedler

Department of Theatre & Dance and
College of Arts & Humanities present

A PLAY BY JOHN CARIANI

PAGE TO STAGE

ALMOST, MAINE

NOVEMBER 7-8 2025

MALONE HALL COURTYARD

ARTISTIC TEAM

DIRECTORS & DESIGNERS

John Alloway, John Ingram, & Kate Zedler

STAGE MANAGER

Jason Varney

FIGHT DIRECTOR

Alex Piper

INTIMACY COORDINATOR

Caitlin Hicks

ALMOST, MAINE was developed by The Cape Cod Theatre Project.

Professional Premiere Production: Portland Stage Company, Anita Stewart, Artistic Director, Tami Ramaker, Managing Director.

Originally produced in New York by Jack Thomas/Bulldog Theatrical and Bruce Payne.

Original Music by Julian Fleisher.

CAST

Prologue, Interlogue, & Epilogue | *directed by John Alloway*

Nicholas Piceno.....Pete
Kate Simechak*.....Ginette

Scene One: Her Heart | *directed by John Ingram*

Mac Greer.....East
Ashlyn Bradford*.....Glory

Scene Two: Sad & Glad | *directed by Kate Zedler*

Andrew Stanfield.....Jimmy
Chazney Livermore.....Sandrine
Lizzie Weed*.....Waitress

Scene Three: This Hurts | *directed by John Ingram*

Jenna Kelley*.....Steve
Sadie Glawson*.....Marvalyn

Scene Four: Getting It Back | *directed by Kate Zedler*

Chazney Livermore.....Gayle
Devin Caster.....Lendall

Scene Five: They Fell | *directed by John Alloway*

Ashton Rigby*.....Chad
Nicholas Piceno.....Randy

Scene Six: Where It Went | *directed by John Alloway*

Kate Simechak*.....Marci
Ashton Rigby*.....Phil

Scene Seven: Story of Hope | *directed by Kate Zedler*

Lizzie Weed*.....Hope
Andrew Stanfield.....Man

Scene Eight: Seeing The Thing | *directed by John Ingram*

Jenna Kelley*.....Dave
Ashlyn Bradford*.....Rhonda

PRODUCTION STAFF

Assistant Production Manager: Ashlyn Bradford

Assistant Stage Managers: Khloe Craig & Rebecca Cook

Scenic Consultants: Jennifer Glass & Caleb Dawson

Lighting Consultant: Joseph Crawford

Lighting Assistants: Jenna Kelley & Jason Varney

Costume Consultant: Andrew Haueter

Costume Assistant: Sarah Wohlford

Props Assistant: Kole Hovis

Soundboard Operator: Alex Valdez

Ushers: Directors

Production Photographer: Ryann Daniel

Marketing Assistant: Ella Pratt

DEPARTMENT OF THEATRE & DANCE FACULTY & STAFF

Dominique Angel	Lecturer, Dance
Tori Lee Averett	Associate Professor, Department Chair
Jane Barwood	Departmental Secretary II
Joyce Bamman	Lecturer, Costume Shop
James Boyd	Lecturer, Dance
Quinton Cockrell	Professor, Theatre Performance
Joseph Crawford	Lecturer, Lighting
Caleb Dawson	Lecturer, Scenic
Jennifer Glass	Technical Director, Scene Shop Manager
Andrew Louis Haueter	Assistant Professor, Costume Design
Deborah Chappell Hicks	Coordinator of Dance
Adrienne Hicks	Lecturer, Dance
Tommy Newman	Lecturer, Musical Theatre, Playwriting
Alex Piper	Lecturer, Theatre Performance
Jerome Stigler	Assistant Professor, Dance

DIRECTORS' NOTES

Welcome to the Directing II class production of John Cariani's *Almost, Maine*. Through our discussions about what pieces we could do and the stories we wanted to tell, we came to the conclusion as a class that we wanted to challenge ourselves. In doing so, we decided on *Almost, Maine*, a vignette show with a singular theme, human connection, that we have worked on as three separate directors.

This play struck us when reading, because of its exploration of human connection and how magical love can truly be. As theatrical artists, we often discuss the tendency of art to hold up a mirror to its observer, to reflect the intricacies of life. *Almost, Maine* does exactly that.

Everything in *Almost, Maine* is real. It's moved us throughout the process of our reading, analysis, and putting it on its feet.

It's moved our actors. Their connection to the material and to each other has allowed them to craft complex performances and to create full lives in each of their pieces.

We hope that this show moves you as well. That it reflects the good, the bad, and the ugly.

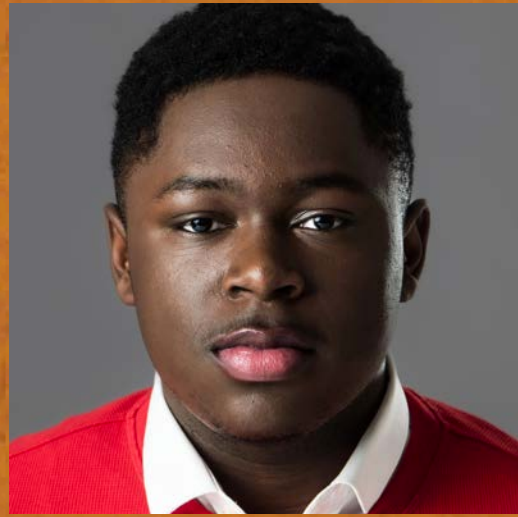
We hope it makes you laugh and cry, and that you walk away with a revitalized sense of how surreal falling in and out of love can be.

Thank you for being here. Thank you for supporting student directors, actors, and designers. And most of all, thank you for supporting the future of theatre.

Please enjoy *Page to Stage: Almost, Maine*.

- John Alloway, John Ingram, & Kate Zedler
Directing II Students

The Company of **PAGE TO STAGE** **ALMOST, MAINE**



John Alloway
Director



John Ingram
Director



Kate Zedler
Director



Jason Varney
Stage Manager



Khloe Craig
Assistant Stage Manager



Rebecca Cook
Assistant Stage Manager



Alex Valdez
Soundboard Operator



Nicholas Piceno
Pete / Randy



Kate Simechak
Ginette / Marci



Mac Greer
East



Ashlyn Bradford
Glory / Rhonda



Andrew Stanfield
Jimmy / Man



Chazney Livermore
Sandrine / Gayle



Lizzie Weed
Waitress / Hope



Jenna Kelley
Steve / Dave



Sadie Glawson
Marvalyn



Devin Caster
Lendall



Ashton Rigby
Chad / Phil

SPECIAL THANKS

Dr. Jack Hawkins, Chancellor
Mrs. Janice Hawkins
Dr. Michael Thrasher, Dean, CAH
Dean Herb Reeves and Event Management
Physical Plant
University Marketing and Communication
Department of Theatre and Dance Audience Engagement Team
Department of Art and Design
Tori Lee Averett
Jane Barwood
Alex Piper
Caitlin Hicks
Adie Carter
William Moncrief
Jessica Fleischmann
Rebecca Cook
Alyne Scarbrough
Gracie Ammons
Troy Arts Council
Johnson Center for the Arts
Alpha Psi Omega, Eta Sigma Chapter

UPCOMING PRODUCTIONS

November 13-16
Ride the Cyclone

November 20-22 & December 2
Clara's Nutcracker

December 8
Creative Habit Showcase



Department of
Theatre and Dance